

2013 WYNPS ANNUAL MEETING SCHEDULE

Friday July 26th - LILY LAKE CAMPGROUND HIKE AND CAMPFIRE

7 pm - Lily Lake hike. Walk from the campground to the nearest fun fen flora a few minutes away. Bring boots.

8 pm or so - Campfire!

Saturday July 27th - TWO HALF-DAY FIELDTRIPS or ONE-DAY FIELDTRIP SERIES

9 am - 5 pm (Bring your lunch, bug spray, bear spray, water, rain gear and rubber boots or waterproof footwear)

Half-day hikes - meet @ 9 am at parking lot on top of Clay Butte (Clay Butte Lookout)

BEARTOOTH BUTTE half-day hike - Visit the potential Beartooth Butte Research Natural Area in a stunning alpine setting, and Whitlowwort Wonder of Wyoming with 5 whitlowworts (*Draba*) species. Leader: Walt Fertig.

SWAMP LAKE half-day hike - Visit the highest concentration of rare wetland plants in Wyoming, including red manzanita, a plant of the far north found nowhere else in the conterminous United States except at Swamp Lake Special Botanical Area. Leader: Walt Fertig.

Full-day hike series - meet at 9 am at Top of the World Store (located on the Beartooth Hwy between Bear Lake and Island Lake Campgrounds)

ALPINE EXPLORATION - one-day field trip as a series of hikes - Examine all-things-alpine, from mosses and fungi, to permafrost and rock polygons among a blaze of flowering plants, including those that reach Wyoming only in the Beartooths. Leaders: Phil Robertson (S. Illinois University, ret.), Cathy Cripps (Montana State University), Elena Kosovich (independent researcher), Bonnie Heidel (WYNDD), Jennifer Lyman (Rocky Mountain College).

Saturday evening - HUNTER PEAK RANCH

5:30 pm Social Hour

6:30-7:30 Dinner

7:30-8:30 Evening Program

- Geology of the Beartooths, by Ken Pierce (USGS, ret.)

- Plants and Volcanoes of Yellowstone - It's a Blast!, by Jennifer Whipple (NPS, ret.)

Sunday morning July 28th - HUNTER PEAK RANCH

8:00 am WYNPS annual meeting - the coffee's on!

Sunday - ONE HALF-DAY or a WHOLE DAY FIELDTRIP

9 am - 12 pm ALPINE HIKE - abbreviated version; Leader: Walt Fertig

9 am - 5 pm SAWTOOTH PEAT BEDS - 7 miles (roundtrip) strenuous hike to see the Sawtooth Fen-Palsa potential Geological Interest Area, the only palsa fen in the conterminous United States. Leader: Kent Houston (USFS)

LODGING and CAMPING

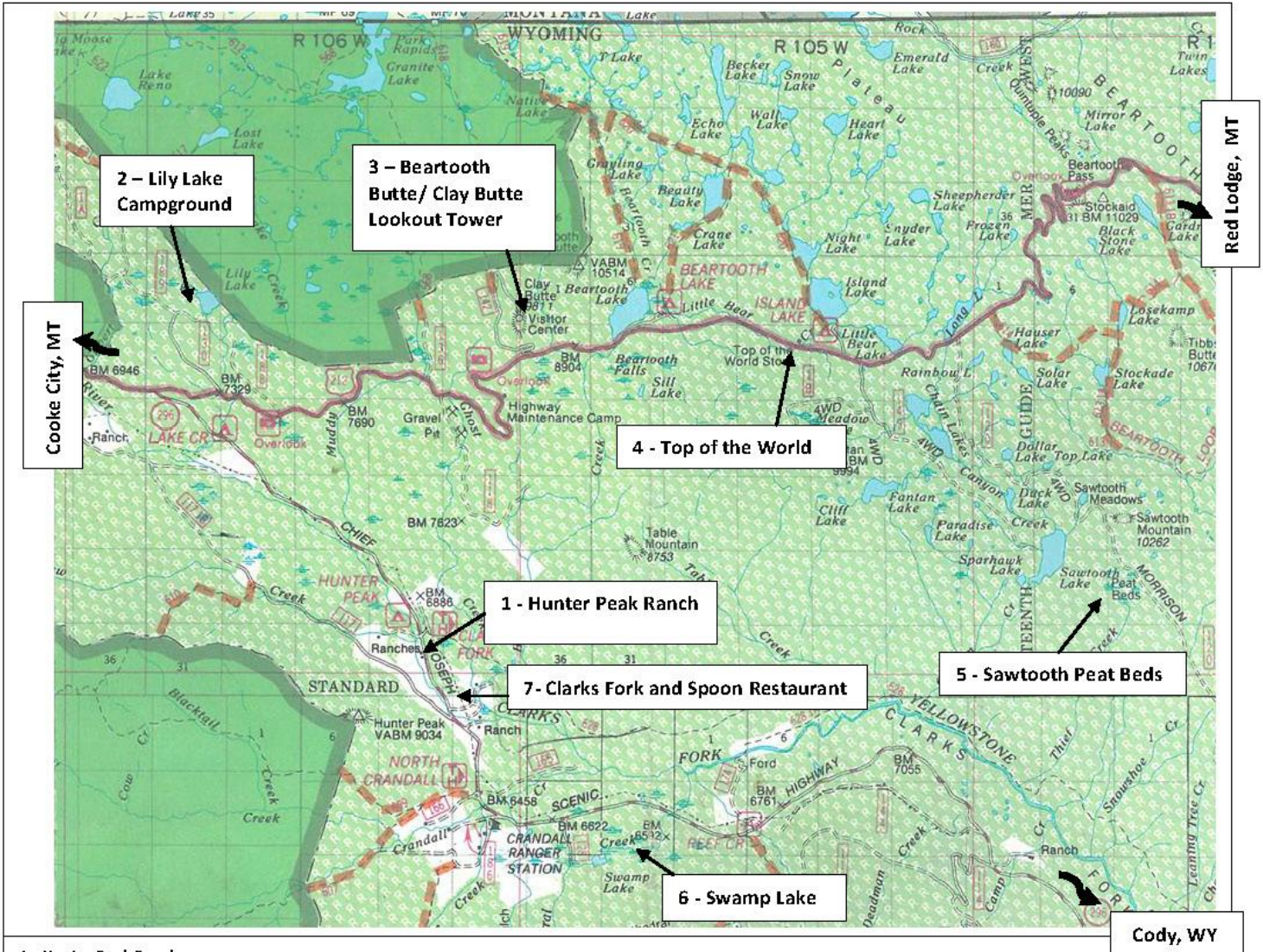
Hunter Peak Ranch has accommodations for multiple groups of 2-6 people - great for families or friends, offering private rooms and kitchenettes. Reservations fill up fast - the Ranch recommends making reservations early:

(307) 587-3711 or <http://www.hunterpeakranch.com/>

Lily Lake Campground is free - but it is first come, first serve. If you'd like a campsite at Lily Lake, please indicate so on the reservation form. We will have volunteers claim sites Friday morning as best we can but we can't promise anything for sure. Room for two cars/site. Hunter Peak Campground is the only local FS campground that takes reservations (1-877-444-7777, Monday-Saturday or online at www.recreation.gov). It is right next to the Hunter Peak Ranch and there is room for RVs but no hookups. There are also Fox Creek, Crazy Creek, Lake Creek, Beartooth Lake and Island Lake campgrounds within 15 miles. RVs are OK but no hookups. Are all available on a first come, first serve basis.

Checklists of plants we'll see on Saturday hikes are posted at the WYNPS homepage along with a Beartooth geology map. If you don't have internet access, there'll be some extra copies at the hike.

2013 Wyoming Native Plant Society Annual Meeting in the Beartooth Mountains



1 - Hunter Peak Ranch

Coming from the south on Chief Joseph Hwy (WY Hwy 296), go 1 mile north of the Bridge over the Clarks Fork of the Yellowstone River. Look for the Hunter Peak Ranch sign on the left side of the highway (west side). *You have arrived!*

Coming from the north on Chief Joseph Hwy (WY Hwy 296), go ~5 miles south of the junction with the Beartooth Highway (US Hwy 212). Look for the Hunter Peak Ranch sign on the right side of the highway (west side), right after passing by the Hunter Peak Campground (USFS).

2 - Lily Lake Campground

From the junction of Chief Joseph Hwy (WY Hwy 296) and the Beartooth Highway (US Hwy 212), go east almost 1 mile. Look for the Lily Lake Campground turn on the left (north side). Follow the gravel road to a T-intersection. Turn right (east) to drop down to the lakeside campground.

3 - Beartooth Butte/ Clay Butte Lookout Tower and Visitor Center – proposed Botanical Area

From the junction of Chief Joseph Hwy (WY Hwy 296) and the Beartooth Highway (US Hwy 212), go east about 6 miles. Look for the Clay Butte Lookout Tower turn-off. Go to the parking lot on top. (Early-birds take note: There is a gate across the road that will not be open until shortly before the Saturday meeting time.)

4 - Top of the World public parking area (south side; store is on the north side) – for alpine hikes in designated Line Creek Research Natural Area, making 3 stops

From the junction of Chief Joseph Hwy (WY Hwy 296) and the Beartooth Highway (US Hwy 212), go east about 10 miles. Look for the Top of the World Store on the left (north side). Meet in the large public parking pull-off on the right (south) side.

5 - Sawtooth Peat Beds – proposed Geological Area

From the Top of the World Store, go less than 1 mile east on the Beartooth Highway (US Hwy 212). Turn right to Morrison Jeep Trail parking lot. (The turn is across from Long Lake).

6 - Swamp Lake – designated Botanical Area

From the Bridge over the Clarks Fork of the Yellowstone River on the Chief Joseph Hwy (WY Hwy 296), meet at the Swamp Lake pull-off about 3.5 miles south-and-east. The pull-off is on the right (south) with the lake and cliffs in view.

Gas and supplies are limited to the Top of the World Store, and the Clarks Fork and Spoon Restaurant and Gas Station (near Hunter Peak Ranch). Nearest town is Cooke City.

2013 WYNPS Annual Meeting Registration Form

All hike events are free, and every event is open to the public. Please return this form by **June 24, 2013** for dinner reservations and to help us prepare. If you plan to attend the annual meeting or any of the hikes, but don't need dinner or a spot saved at Lily Lake, please return this form anyway as we'd still like to know you are coming! No dogs, please, on any of the hikes.

Name _____

Address _____ City _____ State _____ Zip _____

Phone _____ Email _____

Number in party _____

I (we) plan to participate on: _____ Friday _____ Saturday _____ Sunday

_____ Yes, I would like a Lily Lake campsite reserved for me, if possible.

Saturday hike preference:

_____ Alpine full-day fieldtrip

_____ Beartooth Butte and Swamp Lake half-day fieldtrips

Sunday hike preference:

_____ Alpine half-day fieldtrip

_____ Sawtooth palsa fen full-day fieldtrip

Saturday evening dinner at Hunter Peak Ranch. Price is \$22 per person (\$1 per year of age for children 12 and under) and includes light appetizers, dinner, homemade bread, dessert, iced tea or lemonade. No alcohol is sold but you may bring your own. Please indicate your dinner choice and number of people if you are registering for others:

Steak _____ Fish _____ Vegetarian _____

Also please indicate if you have any special dietary restrictions or needs: _____

Number of adults _____ X \$22.00 per adult = _____

Children's ages _____ X \$1 per year of age = _____

Membership (optional; see below) _____

Total enclosed = _____

Please enclose check or money order made out to Wyoming Native Plant Society. Sorry, we cannot accept credit cards. Please mail this registration form and payment to WYNPS, P.O. Box 2449, Laramie, WY 82073. If you have questions, please contact Ann Boelter (amb749@yahoo.com), Bonnie Heidel (bheidel@uwyo.edu) or Kent Houston (khouston@bresnan.net).

Checklists of plants we'll see on Saturday hikes are posted at the WYNPS homepage along with a Beartooth geology map that you can bring. If you don't have internet access, there'll be some extra copies at the hike.

Become a member of WYNPS ! Annual membership choices:

_____ \$7.50 Regular membership

_____ \$15.00 Scholarship Supporting Member (\$7.50 for membership and \$7.50 to scholarship fund)

_____ \$200 Life Membership (\$150 for membership and \$50 to scholarship fund)

_____ \$5 Sublette Chapter membership

_____ \$5 Teton Chapter membership

___ New

___ Renewing